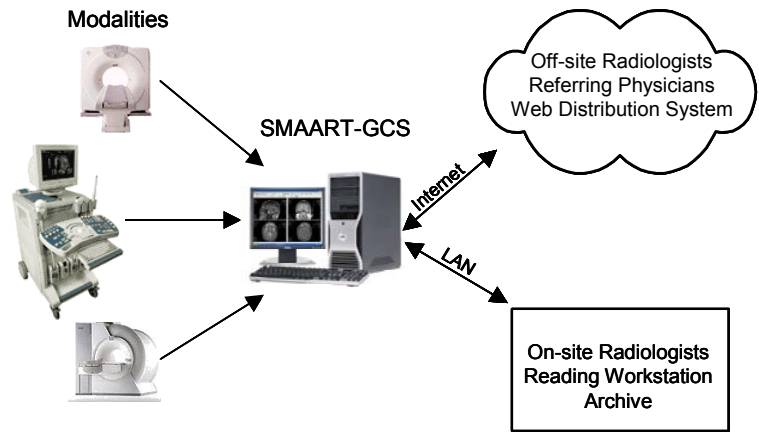


INTRODUCTION

The SMAART-GCS is the first step in implementing a filmless environment. When connected to your LAN or the Internet, it provides a complete software and hardware solution for sending, receiving and viewing DICOM images.

The GCS is a third-generation DICOM communication system and tech workstation for your imaging center. It provides communication between your modalities and the locations where the images are needed. The GCS also performs the functions of an enhanced teleradiology system.



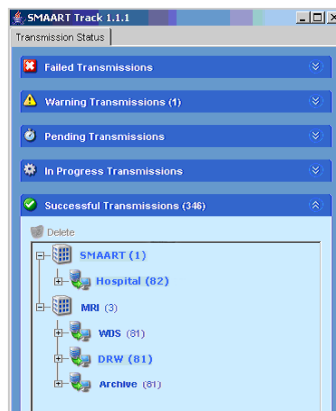
FEATURES & BENEFITS

Third Generation DICOM Communication System

- SMAART-Acceleration for image transmission up to 5 times faster than normal
- Automatic rules-based routing of images for time of day and multi-location transmissions
- Complete DICOM compatibility to communicate with other DICOM systems
- Maximum uptime with automatic fault detection

Image Management

- Graphical User Interface for managing image transmissions throughout the network
- Automatically ensures successful transmissions
- Real-time transmission status
- Isolation and troubleshooting of network issues
- Start, stop and re-prioritize image transmissions



Optional RIS Integration

- View schedules
- Technologist worklist
- Arrive patients
- Allow technologist to enter notes for radiologist
- Update exam information

Tech Workstation

- Review and manipulate data received from DICOM modalities
- 3D/volume, 3D/MIP and MPR functions
- Simultaneous multiple study examinations and cross referencing
- Pan & zoom, window levels, measurement and cine functions
- Synchronized stacking and annotation
- Mouse thumbwheel scroll for slice-by-slice viewing
- Supports DICOM send, receive, query and print
- Create CDs with a viewer
- Displays single or multiple slice images
- Prints to any supported local and/or network paper printer
- 17" high-resolution color flat panel display

Additional PACS Components

- Archive: On-site/on-line image storage
- Disaster recovery: Store offsite for HIPAA compliance
- Diagnostic Reading Workstation (DRW): View and manipulate data from DICOM modalities
- Web Distribution System (WDS): Secure web image distribution for physicians
- LAN Distribution System (LDS): Image viewing from any computer on your network